A man in a dark suit and tie is holding a tablet. The tablet screen is filled with futuristic, glowing blue and white data visualizations, including hexagonal patterns, a world map, and a classroom scene with a teacher at a podium. The background is a bright blue gradient with light rays.

# Smart Schools Bond Act

Marion Central School  
District

# Purpose

Funding to support educational technology and infrastructure in order to improve learning and opportunity for students to succeed in the 21st century economy.



# Funding to

- High speed broadband or wireless connectivity
- Learning technology equipment
- Instructional space for Pre-K
- High-tech security features on campus



# Conditions

- Demonstration of need
- Adequate technological infrastructure
- Sustainability
- Professional Development
- Technical Support



# Allocation

\$1,038,923

- One-time allocation
- No deadlines for submission
- Funds do not expire
- Funds can be reimbursed on an ongoing basis
- Funding mechanism not set up yet





# Steps

1. Review allocation amount
2. Identify district needs
3. Stakeholder engagement
4. Capital planning ?
5. Instructional technology plan-submitted and approved
6. Preliminary Plan submission to BOE (once online form is available)
7. 30 day Review-public comments accepted
8. Public Hearing
9. Final plan-BOE Approval
10. Submit to SED
11. Expenditure and reimbursement of funds.

# School Connectivity Infrastructure Upgrade

## Components

Servers  
Switches  
Wireless  
Cabling  
Management Center



# Servers

7 Physical servers

5 Esxi Hosts

1 Domain Controller

1 VCenter server





# Switches

Core Switch- HS  
Core Switch-ES  
29 Edge Switches



# Wireless

Wireless Access  
Management  
Wireless Access Points

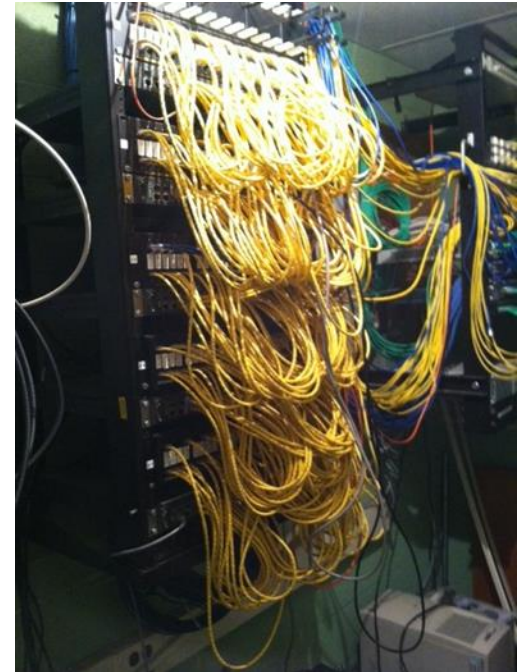




## Cabling

Upgrade to cat6 or  
cat6a

Upgrade fiber inside  
to OM3 or OM4



# HP IMC

HP IMC Enterprise  
Software Platform with 50-  
node E-LTU

HP IMC WSM Software  
Module with 50 Access  
Point E-LTU

HP 3 year 24x7 Care Pack  
Service

Additional Service Charges





Questions or comments?